

Tabel centralizator drumuri exploatare

MUNCELU - RECEA - TRANȘAUN I

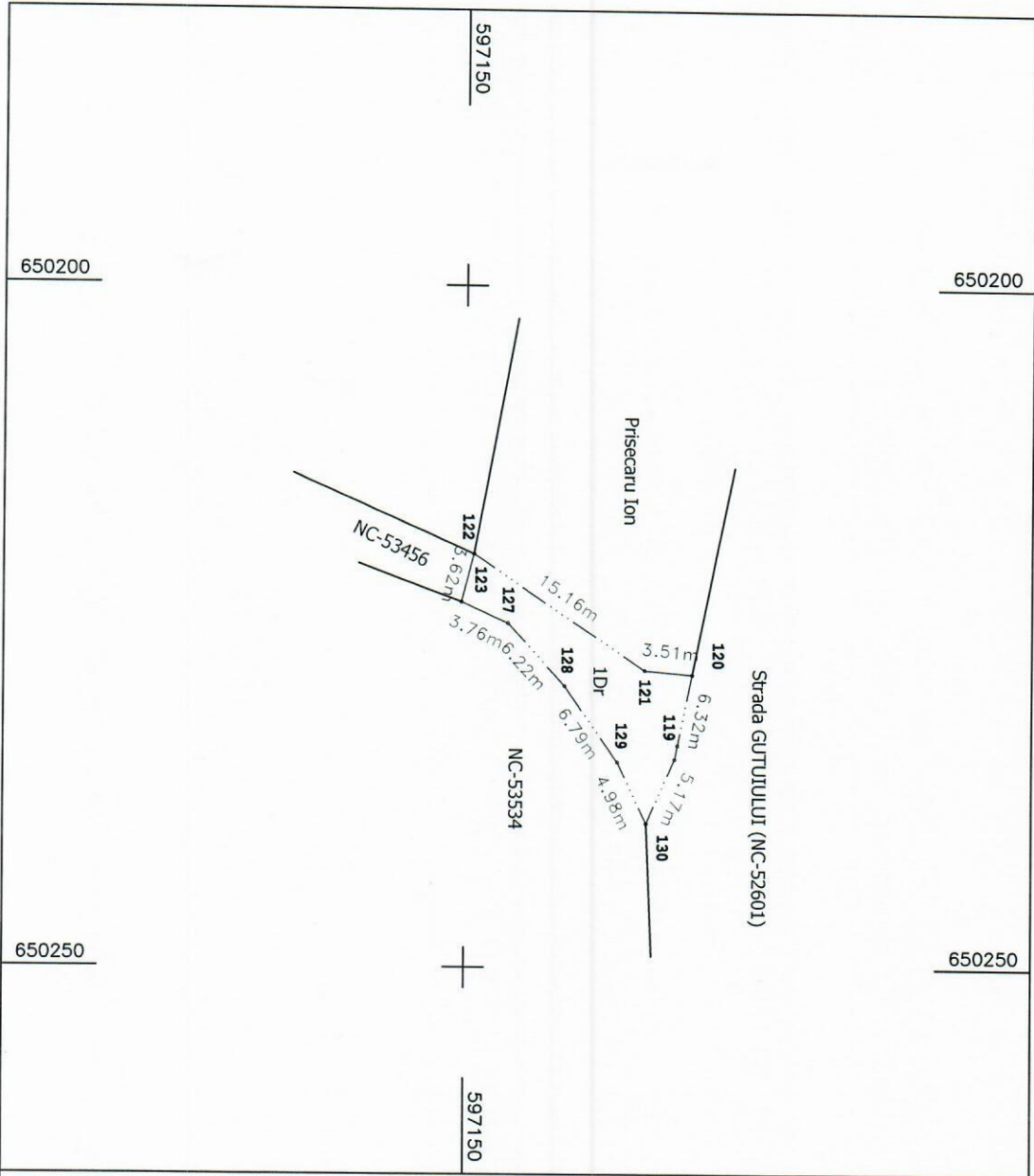
Nr. crt.	Denumire/identificare	Lungime drum (m)	Suprafata (mp)	tarla	parcela	Operatiuni cadastrale
1	Drum exploatare din str. Spicului (loc. Izvoru) pâna in izlaz comunal (NC-54757)	1338	5792	47	DE-361	Prima inregistrare C.F.
2	Drum exploatare din str. Spicului (loc. Izvoru) pâna in DE-367 (NC-5731)	1005	2494	51	DE-373	Prima inregistrare C.F.
	Drum exploatare la SUD de tarla LOTRU (NC-57311) pâna la canal (proprietate ANIF Neamt)	779	3288	49	DE-367	Provine din sistematic (NC-57311), va trebui actualizat cu acte de proprietate si adresa.
	Drum exploatare de la canal (proprietate ANIF Neamt) pana la str. Teiului (loc. Ion Creanga)	97	480	41	DE-330	Prima inregistrare C.F.
3	Drum exploatare din str. Șesului (loc. Averesti) pâna in canal desecare (proprietatea ANIF Neamt -tarla Luncă Irimia)	1262	5063	76	DE	Provine din sistematic (NC-58743), va trebui actualizat cu acte de proprietate si adresa.
	Drum exploatare de la canal desecare (proprietatea ANIF Neamt -tarla Luncă Irimia) până la DJ 207 C (loc. Stejaru)	66	268	77	DE	Provine din sistematic (NC-58588), va trebui actualizat cu acte de proprietate si adresa.
4	Drum exploatare din str. Gutuiului (loc. Muncelu) pâna DE-229 (din sistematic NC-53456) - completare	20	97	33	DE-229	Prima inregistrare C.F.
	Drum exploatare DE-229 (din sistematic NC-53456)	3375	16941	33	DE-229	Provine din sistematic (NC-53456), va trebui actualizat cu acte de proprietate si adresa.
	Drum exploatare DE-229 - completare pâna la str. Ponor (loc. Recea)	121	621	33	DE-229	Prima inregistrare C.F.
5	Drum exploatare din str. Mihai Viteazu (loc. Muncelu) pâna limita UAT Ion Creanga-UAT Icusesti spre loc. Bălușești	2225	8977	30	DE-263	Prima inregistrare C.F.
6	Drum exploatare -Livada Intensivă - din str. Iazului (loc. Stejaru) pâna la str. Enache Fotache (loc. Averesti)	2866	12820	75	DE-555	Prima inregistrare C.F.

7	Drum exploatare (NC-57212) de la canal (proprietate ANIF Neamt) până la Canton David	1380	6631	47	DE-361	Provine din sistematic (NC-57212), va trebui actualizat cu acte de proprietate si adresa.
8	Drum exploatare din str. Mihai Eminesc (loc. Ion Creanga) pâna zona de protectie pâ râul Țiganca (proprietatea A.B.A. Siret Bacau si ANIF Neamt)	1152	4654	38	DE-303	Prima inregistrare C.F.
	Drum exploatare de la zona de protectie pâ râul Țiganca (proprietatea A.B.A. Siret Bacau si ANIF Neamt) până la pasune Țiganca Izvoru	756	3030	35	DE-284	Prima inregistrare C.F.
	Drum exploatare continuare (ID-5950)	1121	4705	35,87	DE-284, 701	Provine din sistematic (ID-5950), va trebui actualizat cu acte de proprietate si adresa.

PLAN DE AMPLASAMENT SI DELIMITARE A IMOBILIULUI

Scara 1 : 500

Nr. cadastral	Suprafata masurata a imobilului (mp)	Adresa imobilului
	97	Localitatea Muncelu, comuna Ion Creanga Judetul Neamt
Cartea Funciara nr.		Unitatea Administrativ Teritoriala (UAT) Ion Creanga



A. Date referitoare la teren

Nr. parcela	Categoria de folosinta	Suprafata (mp)	Mentuni
1	Dr	97	Imobil nu este imprejmuir
Total		97	

B. Date referitoare la constructii

Destinatia	Suprafata construita la sol (mp)	Mentuni

Suprafata totala masurata a imobilului = 97 mp
Suprafata din act = 97 mp

Executant: GURGIULA N.Gelu
 Autorizatie Cat.B, Seria RO-B-F, Nr. 0167
 Confirm executarea masuratorilor la teren
 corectitudinea intocmirii documentelor cadastrale si
 corespondenta acestora cu realitatea din teren

(Signature)

MINISTERUL DE INTERIORE SI ADMINISTRATIE PUBLICA
GURGIULA N. GELU
 S.E. 5767
 S.C. 1000694F

17.04.2024
 Inspector

Confirm introducerea imobilului in baza de date integrata si
 atribuirea numarului cadastral

Stampila BCPI

Tabel centralizator drumuri exploatare

MUNCELU - RECEA - tronson II

Nr. crt.	Denumire/identificare	Lungime drum (m)	Suprafata (mp)	tarla	parcela	Operatiuni cadastrale
1	Drum exploatare din str. Spicului (loc. Izvoru) pâna in izlaz comunal (NC-54757)	1338	5792	47	DE-361	Prima inregistrare C.F.
2	Drum exploatare din str. Spicului (loc. Izvoru) pâna in DE-367 (NC-5731)	1005	2494	51	DE-373	Prima inregistrare C.F.
	Drum exploatare la SUD de tarla LOTRU (NC-57311) pâna la canal (proprietate ANIF Neamt)	779	3288	49	DE-367	Provine din sistematic (NC-57311), va trebui actualizat cu acte de proprietate si adresa.
	Drum exploatare de la canal (proprietate ANIF Neamt) pana la str. Teiului (loc. Ion Creanga)	97	480	41	DE-330	Prima inregistrare C.F.
3	Drum exploatare din str. Şesului (loc. Averesti) pâna in canal desecare (proprietatea ANIF Neamt -tarla Luncă Irimia)	1262	5063	76	DE	Provine din sistematic (NC-58743), va trebui actualizat cu acte de proprietate si adresa.
	Drum exploatare de la canal desecare (proprietatea ANIF Neamt -tarla Luncă Irimia) până la DJ 207 C (loc. Stejaru)	66	268	77	DE	Provine din sistematic (NC-58588), va trebui actualizat cu acte de proprietate si adresa.
4	Drum exploatare din str. Gutuiului (loc. Muncelu) pâna DE-229 (din sistematic NC-53456) - completare	20	97	33	DE-229	Prima inregistrare C.F.
	Drum exploatare DE-229 (din sistematic NC-53456)	3375	16941	33	DE-229	Provine din sistematic (NC-53456), va trebui actualizat cu acte de proprietate si adresa.
	Drum exploatare DE-229 - completare pâna la str. Ponor (loc. Recea)	121	621	33	DE-229	Prima inregistrare C.F.
5	Drum exploatare din str. Mihai Viteazu (loc. Muncelu) pâna limta UAT Ion Creanga-UAT Icusesti spre loc. Băluşeşti	2225	8977	30	DE-263	Prima inregistrare C.F.
6	Drum exploatare -Livada Intensivă - din str. Iazului (loc. Stejaru) pâna la str. Enache Fotache (loc. Averesti)	2866	12820	75	DE-555	Prima inregistrare C.F.

7	Drum exploatare (NC-57212) de la canal (proprietate ANIF Neamt) până la Canton David	1380	6631	47	DE-361	Provine din sistematic (NC-57212), va trebui actualizat cu acte de proprietate si adresa.
8	Drum exploatare din str. Mihai Eminesc (loc. Ion Creanga) pâna zona de protectie pârâul Țiganca (proprietatea A.B.A. Siret Bacau si ANIF Neamt)	1152	4654	38	DE-303	Prima inregistrare C.F.
	Drum exploatare de la zona de protectie pârâul Țiganca (proprietatea A.B.A. Siret Bacau si ANIF Neamt) până la pasune Țiganca Izvoru	756	3030	35	DE-284	Prima inregistrare C.F.
	Drum exploatare continuare (ID-5950)	1121	4705	35,87	DE-284, 701	Provine din sistematic (ID-5950), va trebui actualizat cu acte de proprietate si adresa.



Oficiul de Cadastru și Publicitate Imobiliară NEAMT
Biroul de Cadastru și Publicitate Imobiliară Roman

CARTE FUNCİARĂ NR. 53456
COPIE

Carte Funciară Nr. 53456 Ion Creanga

A. Partea I. Descrierea imobilului

TEREN Partial Intravilan

Adresa: Loc. Averesti, Jud. Neamt, și extravilan comuna Ion Creangă

Nr. Crt	Nr. cadastral Nr. topografic	Suprafața* (mp)	Observații / Referințe
A1	53456	16.941	Teren neimprejmuit;

B. Partea II. Proprietari și acte

Înscrieri privitoare la dreptul de proprietate și alte drepturi reale	Referințe
24969 / 02/08/2020	
Registrul Cadastral al Imobilelor (UAT Ion Creanga); Act Normativ lg.7/1996 emis de Parlamentul Romaniei;	
B1	Se infiinteaza cartea funciara a imobilului 53456 ca urmare a finalizarii inregistrarii sistematice. Imobilul se gaseste in registrul cadastral al imobilelor sub numarul 1114. A1
Act Normativ nr. 7, din 13/03/1996 emis de PARLAMENTUL ROMÂNIEI (lege);	
B2	Inscrierea provizorie, drept de PROPRIETATE, dobandit prin Lege, cota actuala 1/1, cota initiala 1/1 A1
1) COMUNA ION CREANGĂ , CIF:2613753	

C. Partea III. SARCINI

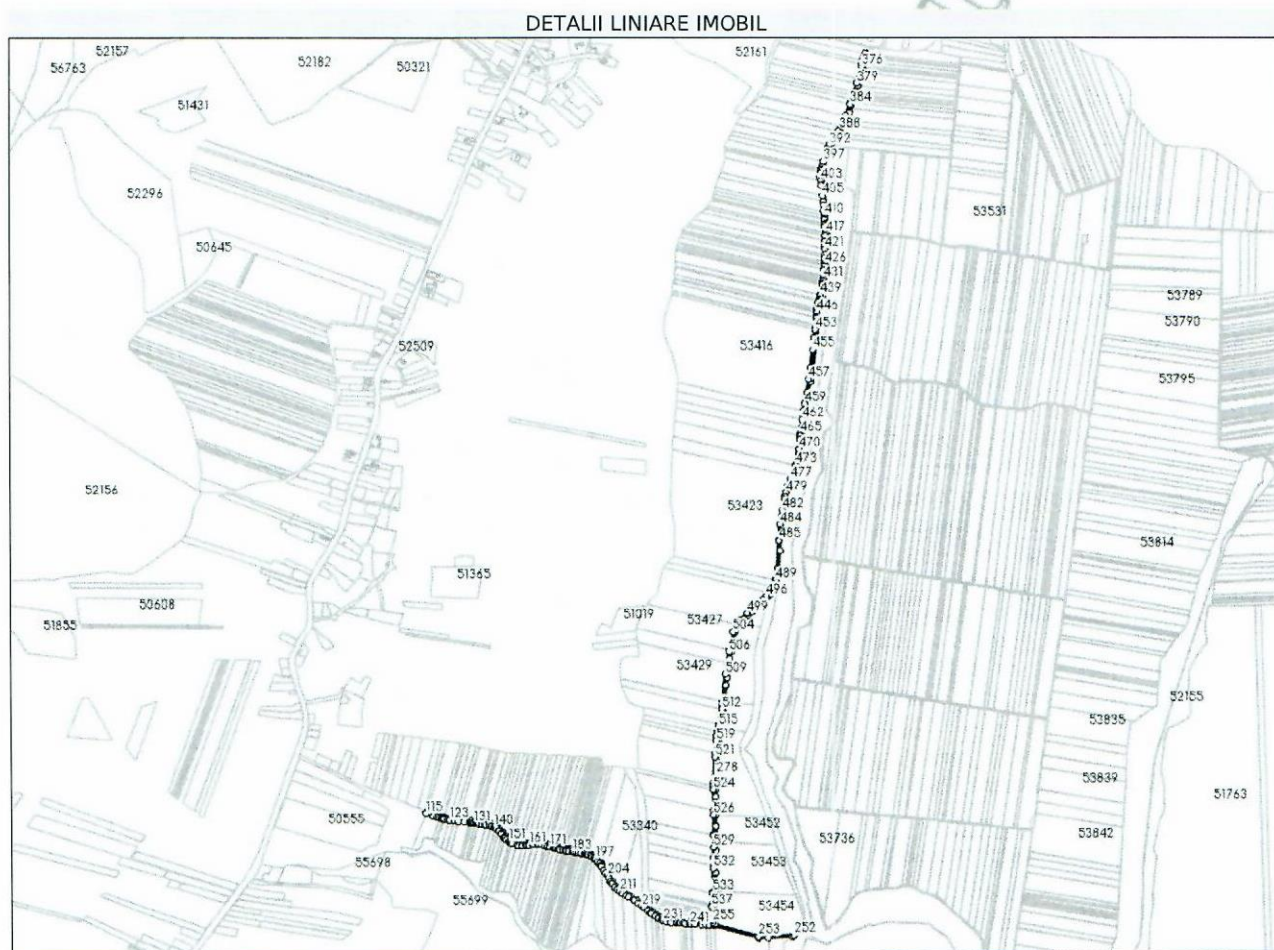
Inscrieri privind dezmembrămintele dreptului de proprietate, drepturi reale de garanție și sarcini	Referințe
NU SUNT	

Anexa Nr. 1 La Partea I

Teren

Nr cadastral	Suprafața (mp)*	Observații / Referințe
53456	16.941	

* Suprafața este determinată în planul de proiecție Stereo 70.



Date referitoare la teren

Nr Crt	Categorie folosință	Intra vilan	Suprafața (mp)	Tarla	Parcelă	Nr. topo	Observații / Referințe
1	drum	NU	16.794	-	229	-	DE 229-4m
2	drum	DA	147	-	229	-	DE 229-4m

Lungime Segmente

1) Valorile lungimilor segmentelor sunt obținute din proiecție în plan.

Punct început	X / Y	Punct sfârșit	X / Y	Lungime segment	Punct început	X / Y	Punct sfârșit	X / Y	Lungime segment	Punct început	X / Y	Punct sfârșit	X / Y	Lungime segment
1	649.814,411 594.935,367	2	649.813,763 594.931,379	4.04	2	649.813,763 594.931,379	3	649.813,116 594.929,433	2.051	3	649.813,116 594.929,433	4	649.811,171 594.923,58	6.168
4	649.811,171 594.923,58	5	649.809,96 594.919,937	3.839	5	649.809,96 594.919,937	6	649.805,702 594.914,545	6.871	6	649.805,702 594.914,545	7	649.805,513 594.914,305	0.305
7	649.805,513 594.914,305	8	649.799,862 594.909,913	7.158	8	649.799,862 594.909,913	9	649.794,47 594.906,697	6.278	9	649.794,47 594.906,697	10	649.788,686 594.905,35	5.938
10	649.788,686 594.905,35	11	649.774,684 594.905,611	14.005	11	649.774,684 594.905,611	12	649.761,099 594.908,157	13.821	12	649.761,099 594.908,157	13	649.732,768 594.910,73	28.448

Punct început	X / Y	Punct sfârșit	X / Y	Lungime segment	Punct început	X / Y	Punct sfârșit	X / Y	Lungime segment	Punct început	X / Y	Punct sfârșit	X / Y	Lungime segment
13	649.732,768 594.910,73	14	649.717,318 594.911,239	15.458	14	649.717,318 594.911,239	15	649.704,86 594.912,725	12.547	15	649.704,86 594.912,725	16	649.697,182 594.914,881	7.974
16	649.697,182 594.914,881	17	649.689,759 594.917,544	7.887	17	649.689,759 594.917,544	18	649.683,224 594.920,841	7.32	18	649.683,224 594.920,841	19	649.672,93 594.927,418	12.216
19	649.672,93 594.927,418	20	649.662,818 594.934,749	12.49	20	649.662,818 594.934,749	21	649.653,44 594.941,739	11.696	21	649.653,44 594.941,739	22	649.636,358 594.956,136	22.34
22	649.636,358 594.956,136	23	649.623,531 594.963,737	14.91	23	649.623,531 594.963,737	24	649.607,969 594.974,246	18.778	24	649.607,969 594.974,246	25	649.596,389 594.980,9	13.356
25	649.596,389 594.980,9	26	649.587,632 594.986,188	10.23	26	649.587,632 594.986,188	27	649.579,708 594.991,272	9.415	27	649.579,708 594.991,272	28	649.578,714 594.991,909	1.181
28	649.578,714 594.991,909	29	649.568,157 595.002,878	15.224	29	649.568,157 595.002,878	30	649.559,751 595.015,191	14.909	30	649.559,751 595.015,191	31	649.550,132 595.031,355	18.81
31	649.550,132 595.031,355	32	649.543,829 595.043,028	13.265	32	649.543,829 595.043,028	33	649.533,041 595.060,077	20.176	33	649.533,041 595.060,077	34	649.530,454 595.063,308	4.139
34	649.530,454 595.063,308	35	649.525,165 595.069,913	8.462	35	649.525,165 595.069,913	36	649.518,814 595.075,863	8.702	36	649.518,814 595.075,863	37	649.508,718 595.082,904	12.309
37	649.508,718 595.082,904	38	649.500,708 595.086,642	8.839	38	649.500,708 595.086,642	39	649.499,091 595.087,16	1.698	39	649.499,091 595.087,16	40	649.492,452 595.089,284	6.97
40	649.492,452 595.089,284	41	649.489,496 595.090,231	3.104	41	649.489,496 595.090,231	42	649.482,64 595.092,41	7.195	42	649.482,64 595.092,41	43	649.480,755 595.093,01	1.978
43	649.480,755 595.093,01	44	649.474,918 595.094,061	5.931	44	649.474,918 595.094,061	45	649.470,212 595.094,908	4.782	45	649.470,212 595.094,908	46	649.468,346 595.095,244	1.896
46	649.468,346 595.095,244	47	649.464,464 595.095,553	3.894	47	649.464,464 595.095,553	48	649.460,194 595.095,893	4.284	48	649.460,194 595.095,893	49	649.458,437 595.096,098	1.769
49	649.458,437 595.096,098	50	649.450,19 595.097,057	8.302	50	649.450,19 595.097,057	51	649.449,661 595.097,118	0.533	51	649.449,661 595.097,118	52	649.443,914 595.098,137	5.837
52	649.443,914 595.098,137	53	649.439,952 595.098,839	4.023	53	649.439,952 595.098,839	54	649.433,467 595.100,065	6.6	54	649.433,467 595.100,065	55	649.429,605 595.100,795	3.93
55	649.429,605 595.100,795	56	649.423,133 595.101,782	6.547	56	649.423,133 595.101,782	57	649.419,461 595.102,342	3.714	57	649.419,461 595.102,342	58	649.412,653 595.104,491	7.139
58	649.412,653 595.104,491	59	649.400,774 595.108,247	12.458	59	649.400,774 595.108,247	60	649.393,913 595.110,334	7.172	60	649.393,913 595.110,334	61	649.390,007 595.111,523	4.082
61	649.390,007 595.111,523	62	649.386,898 595.112,155	3.173	62	649.386,898 595.112,155	63	649.376,05 595.114,362	11.07	63	649.376,05 595.114,362	64	649.370,786 595.115,028	5.306
64	649.370,786 595.115,028	65	649.369,047 595.115,248	1.753	65	649.369,047 595.115,248	66	649.361,103 595.115,089	7.945	66	649.361,103 595.115,089	67	649.356,822 595.114,707	4.299
67	649.356,822 595.114,707	68	649.352,206 595.114,295	4.633	68	649.352,206 595.114,295	69	649.343,23 595.113,264	9.035	69	649.343,23 595.113,264	70	649.342,638 595.113,198	0.596
70	649.342,638 595.113,198	71	649.336,002 595.112,47	6.676	71	649.336,002 595.112,47	72	649.330,08 595.112,411	5.922	72	649.330,08 595.112,411	73	649.328,058 595.112,39	2.022
73	649.328,058 595.112,39	74	649.320,692 595.112,252	7.367	74	649.320,692 595.112,252	75	649.316,535 595.113,162	4.255	75	649.316,535 595.113,162	76	649.310,824 595.114,411	5.846
76	649.310,824 595.114,411	77	649.306,013 595.116,912	5.423	77	649.306,013 595.116,912	78	649.302,477 595.119,207	4.215	78	649.302,477 595.119,207	79	649.297,621 595.122,359	5.789
79	649.297,621 595.122,359	80	649.295,508 595.123,731	2.52	80	649.295,508 595.123,731	81	649.289,449 595.129,359	8.269	81	649.289,449 595.129,359	82	649.286,315 595.133,096	4.877
82	649.286,315 595.133,096	83	649.285,582 595.133,97	1.14	83	649.285,582 595.133,97	84	649.285,155 595.134,48	0.665	84	649.285,155 595.134,48	85	649.279,546 595.140,431	8.178
85	649.279,546 595.140,431	86	649.277,526 595.142,43	2.842	86	649.277,526 595.142,43	87	649.271,928 595.147,974	7.878	87	649.271,928 595.147,974	88	649.269,364 595.150,31	3.469
88	649.269,364 595.150,31	89	649.262,827 595.156,267	8.845	89	649.262,827 595.156,267	90	649.260,617 595.157,349	2.46	90	649.260,617 595.157,349	91	649.251,366 595.161,878	10.3
91	649.251,366 595.161,878	92	649.249,898 595.162,596	1.635	92	649.249,898 595.162,596	93	649.239,335 595.165,952	11.083	93	649.239,335 595.165,952	94	649.237,049 595.166,352	2.321
94	649.237,049 595.166,352	95	649.228,871 595.167,782	8.302	95	649.228,871 595.167,782	96	649.219,501 595.168,703	9.415	96	649.219,501 595.168,703	97	649.218,404 595.168,849	1.107
97	649.218,404 595.168,849	98	649.211,266 595.169,797	7.2	98	649.211,266 595.169,797	99	649.207,367 595.170,315	3.934	99	649.207,367 595.170,315	100	649.201,947 595.171,028	5.466
100	649.201,947 595.171,028	101	649.195,092 595.171,93	6.914	101	649.195,092 595.171,93	102	649.184,356 595.173,342	10.829	102	649.184,356 595.173,342	103	649.173,251 595.174,38	11.153
103	649.173,251 595.174,38	104	649.166,695 595.175,127	6.599	104	649.166,695 595.175,127	105	649.161,876 595.175,643	4.847	105	649.161,876 595.175,643	106	649.155,251 595.176,639	6.699
106	649.155,251 595.176,639	107	649.142,396 595.178,572	13.0	107	649.142,396 595.178,572	108	649.131,749 595.180,174	10.767	108	649.131,749 595.180,174	109	649.129,539 595.180,646	2.259

Punct început	X / Y	Punct sfârșit	X / Y	Lungime segment	Punct început	X / Y	Punct sfârșit	X / Y	Lungime segment	Punct început	X / Y	Punct sfârșit	X / Y	Lungime segment
109	649.129,539 595.180,646	110	649.125,383 595.181,536	4.251	110	649.125,383 595.181,536	111	649.119,212 595.182,858	6.311	111	649.119,212 595.182,858	112	649.116,738 595.183,651	2.598
112	649.116,738 595.183,651	113	649.096,075 595.190,276	21.69 9	113	649.096,075 595.190,276	114	649.082,498 595.195,997	14.73 3	114	649.082,498 595.195,997	115	649.081,069 595.191,66	4.567
115	649.081,069 595.191,66	116	649.100,192 595.184,663	20.36 3	116	649.100,192 595.184,663	117	649.108,97 595.180,992	9.515	117	649.108,97 595.180,992	118	649.115,391 595.179,398	6.616
118	649.115,391 595.179,398	119	649.121,124 595.177,974	5.907	119	649.121,124 595.177,974	120	649.124,024 595.177,333	2.97	120	649.124,024 595.177,333	121	649.128,034 595.176,446	4.107
121	649.128,034 595.176,446	122	649.136,333 595.174,61	8.499	122	649.136,333 595.174,61	123	649.141,04 595.173,915	4.758	123	649.141,04 595.173,915	124	649.153,9 595.172,014	13.0
124	649.153,9 595.172,014	125	649.155,107 595.171,836	1.22	125	649.155,107 595.171,836	126	649.165,412 595.170,673	10.37	126	649.165,412 595.170,673	127	649.179,962 595.169,031	14.64 2
127	649.179,962 595.169,031	128	649.193,776 595.167,256	13.92 7	128	649.193,776 595.167,256	129	649.197,3 595.166,803	3.554	129	649.197,3 595.166,803	130	649.200,652 595.166,464	3.369
130	649.200,652 595.166,464	131	649.204,368 595.166,089	3.735	131	649.204,368 595.166,089	132	649.210,0 595.165,479	5.665	132	649.210,0 595.165,479	133	649.213,095 595.165,144	3.113
133	649.213,095 595.165,144	134	649.217,13 595.164,476	4.09	134	649.217,13 595.164,476	135	649.224,937 595.163,186	7.912	135	649.224,937 595.163,186	136	649.232,963 595.161,949	8.121
136	649.232,963 595.161,949	137	649.235,622 595.161,417	2.712	137	649.235,622 595.161,417	138	649.243,998 595.159,742	8.541	138	649.243,998 595.159,742	139	649.250,092 595.157,464	6.506
139	649.250,092 595.157,464	140	649.255,984 595.155,262	6.29	140	649.255,984 595.155,262	141	649.259,39 595.153,034	4.071	141	649.259,39 595.153,034	142	649.261,657 595.151,552	2.708
142	649.261,657 595.151,552	143	649.267,74 595.145,945	8.273	143	649.267,74 595.145,945	144	649.268,057 595.145,588	0.478	144	649.268,057 595.145,588	145	649.274,627 595.138,194	9.891
145	649.274,627 595.138,194	146	649.275,907 595.136,685	1.979	146	649.275,907 595.136,685	147	649.282,684 595.128,697	10.47 5	147	649.282,684 595.128,697	148	649.283,747 595.127,584	1.539
148	649.283,747 595.127,584	149	649.284,499 595.126,795	1.09	149	649.284,499 595.126,795	150	649.288,619 595.122,48	5.966	150	649.288,619 595.122,48	151	649.294,073 595.118,01	7.051
151	649.294,073 595.118,01	152	649.296,061 595.116,86	2.297	152	649.296,061 595.116,86	153	649.301,083 595.113,954	5.802	153	649.301,083 595.113,954	154	649.303,187 595.112,736	2.432
154	649.303,187 595.112,736	155	649.314,853 595.108,192	12.51 9	155	649.314,853 595.108,192	156	649.319,399 595.107,41	4.613	156	649.319,399 595.107,41	157	649.328,585 595.107,198	9.188
157	649.328,585 595.107,198	158	649.329,097 595.107,186	0.512	158	649.329,097 595.107,186	159	649.337,7 595.107,911	8.634	159	649.337,7 595.107,911	160	649.341,234 595.108,308	3.556
160	649.341,234 595.108,308	161	649.345,972 595.108,842	4.768	161	649.345,972 595.108,842	162	649.355,776 595.110,123	9.887	162	649.355,776 595.110,123	163	649.358,23 595.110,443	2.475
163	649.358,23 595.110,443	164	649.369,514 595.110,558	11.28 5	164	649.369,514 595.110,558	165	649.370,221 595.110,565	0.707	165	649.370,221 595.110,565	166	649.376,256 595.109,84	6.079
166	649.376,256 595.109,84	167	649.385,563 595.107,632	9.565	167	649.385,563 595.107,632	168	649.385,607 595.107,619	0.046	168	649.385,607 595.107,619	169	649.392,546 595.105,518	7.25
169	649.392,546 595.105,518	170	649.392,845 595.105,428	0.312	170	649.392,845 595.105,428	171	649.398,094 595.104,212	5.388	171	649.398,094 595.104,212	172	649.399,521 595.103,821	1.479
172	649.399,521 595.103,821	173	649.409,102 595.101,193	9.936	173	649.409,102 595.101,193	174	649.411,499 595.100,408	2.522	174	649.411,499 595.100,408	175	649.416,408 595.098,799	5.166
175	649.416,408 595.098,799	176	649.421,888 595.097,357	5.666	176	649.421,888 595.097,357	177	649.425,305 595.096,458	3.533	177	649.425,305 595.096,458	178	649.432,114 595.095,15	6.934
178	649.432,114 595.095,15	179	649.438,564 595.093,91	6.569	179	649.438,564 595.093,91	180	649.441,71 595.093,305	3.204	180	649.441,71 595.093,305	181	649.442,602 595.093,164	0.902
181	649.442,602 595.093,164	182	649.448,735 595.092,198	6.209	182	649.448,735 595.092,198	183	649.456,968 595.090,9	8.334	183	649.456,968 595.090,9	184	649.462,91 595.090,021	6.007
184	649.462,91 595.090,021	185	649.468,617 595.089,179	5.77	185	649.468,617 595.089,179	186	649.473,367 595.088,478	4.801	186	649.473,367 595.088,478	187	649.478,554 595.087,712	5.243
187	649.478,554 595.087,712	188	649.481,165 595.087,1	2.682	188	649.481,165 595.087,1	189	649.489,115 595.085,236	8.166	189	649.489,115 595.085,236	190	649.491,059 595.084,711	2.014
190	649.491,059 595.084,711	191	649.496,179 595.083,33	5.303	191	649.496,179 595.083,33	192	649.497,77 595.082,612	1.745	192	649.497,77 595.082,612	193	649.503,598 595.079,98	6.395
193	649.503,598 595.079,98	194	649.503,862 595.079,878	0.282	194	649.503,862 595.079,878	195	649.508,301 595.078,164	4.759	195	649.508,301 595.078,164	196	649.514,095 595.073,947	7.167
196	649.514,095 595.073,947	197	649.516,384 595.072,084	2.951	197	649.516,384 595.072,084	198	649.523,189 595.065,021	9.807	198	649.523,189 595.065,021	199	649.526,855 595.060,329	5.955
199	649.526,855 595.060,329	200	649.530,346 595.055,447	6.001	200	649.530,346 595.055,447	201	649.532,645 595.052,23	3.954	201	649.532,645 595.052,23	202	649.538,7 595.043,604	10.53 8
202	649.538,7 595.043,604	203	649.543,201 595.036,347	8.539	203	649.543,201 595.036,347	204	649.547,036 595.029,806	7.583	204	649.547,036 595.029,806	205	649.550,408 595.023,676	6.996

Punct început	X / Y	Punct sfârșit	X / Y	Lungime segment	Punct început	X / Y	Punct sfârșit	X / Y	Lungime segment	Punct început	X / Y	Punct sfârșit	X / Y	Lungime segment
205	649.550,408 595.023,676	206	649.554,898 595.014,614	10.11 4	206	649.554,898 595.014,614	207	649.558,611 595.008,592	7.074	207	649.558,611 595.008,592	208	649.559,406 595.007,303	1.514
208	649.559,406 595.007,303	209	649.566,612 594.998,622	11.28 3	209	649.566,612 594.998,622	210	649.572,035 594.993,565	7.415	210	649.572,035 594.993,565	211	649.577,73 594.988,746	7.46
211	649.577,73 594.988,746	212	649.584,753 594.983,685	8.657	212	649.584,753 594.983,685	213	649.585,774 594.982,949	1.259	213	649.585,774 594.982,949	214	649.596,162 594.976,708	12.11 8
214	649.596,162 594.976,708	215	649.601,252 594.973,471	6.032	215	649.601,252 594.973,471	216	649.614,531 594.965,106	15.69 4	216	649.614,531 594.965,106	217	649.615,111 594.964,741	0.686
217	649.615,111 594.964,741	218	649.625,871 594.957,242	13.11 5	218	649.625,871 594.957,242	219	649.635,854 594.949,854	12.41 9	219	649.635,854 594.949,854	220	649.641,333 594.945,671	6.893
220	649.641,333 594.945,671	221	649.642,145 594.945,051	1.022	221	649.642,145 594.945,051	222	649.651,375 594.937,801	11.73 7	222	649.651,375 594.937,801	223	649.658,189 594.932,286	8.766
223	649.658,189 594.932,286	224	649.660,602 594.930,332	3.105	224	649.660,602 594.930,332	225	649.669,931 594.923,56	11.52 7	225	649.669,931 594.923,56	226	649.670,045 594.923,477	0.141
226	649.670,045 594.923,477	227	649.677,746 594.918,462	9.19	227	649.677,746 594.918,462	228	649.678,209 594.918,161	0.553	228	649.678,209 594.918,161	229	649.685,33 594.914,518	7.999
229	649.685,33 594.914,518	230	649.688,054 594.913,255	3.002	230	649.688,054 594.913,255	231	649.690,746 594.912,007	2.968	231	649.690,746 594.912,007	232	649.697,836 594.909,738	7.444
232	649.697,836 594.909,738	233	649.710,495 594.907,296	12.89 2	233	649.710,495 594.907,296	234	649.724,424 594.906,102	13.98	234	649.724,424 594.906,102	235	649.731,55 594.905,657	7.14
235	649.731,55 594.905,657	236	649.733,466 594.905,538	1.92	236	649.733,466 594.905,538	237	649.740,73 594.905,084	7.278	237	649.740,73 594.905,084	238	649.742,573 594.904,969	1.847
238	649.742,573 594.904,969	239	649.746,643 594.904,616	4.086	239	649.746,643 594.904,616	240	649.757,886 594.903,639	11.28 5	240	649.757,886 594.903,639	241	649.759,711 594.903,425	1.838
241	649.759,711 594.903,425	242	649.763,569 594.902,972	3.884	242	649.763,569 594.902,972	243	649.771,831 594.902,002	8.319	243	649.771,831 594.902,002	244	649.789,539 594.901,159	17.72 8
244	649.789,539 594.901,159	245	649.799,412 594.900,53	9.893	245	649.799,412 594.900,53	246	649.809,32 594.899,898	9.928	246	649.809,32 594.899,898	247	649.821,686 594.899,11	12.39 1
247	649.821,686 594.899,11	248	649.823,146 594.899,017	1.463	248	649.823,146 594.899,017	249	649.936,329 594.866,358	117.8 01	249	649.936,329 594.866,358	250	649.960,664 594.867,372	24.35 6
250	649.960,664 594.867,372	251	650.023,464 594.869,989	62.85 5	251	650.023,464 594.869,989	252	650.027,907 594.873,027	5.383	252	650.027,907 594.873,027	253	649.937,025 594.869,967	90.93 4
253	649.937,025 594.869,967	254	649.823,874 594.902,156	117.6 4	254	649.823,874 594.902,156	255	649.818,361 594.906,818	7.22	255	649.818,361 594.906,818	256	649.816,011 594.913,211	6.811
256	649.816,011 594.913,211	257	649.819,014 594.928,605	15.68 4	257	649.819,014 594.928,605	258	649.821,128 594.945,016	16.54 7	258	649.821,128 594.945,016	259	649.821,539 594.948,703	3.71
259	649.821,539 594.948,703	260	649.822,145 594.952,397	3.743	260	649.822,145 594.952,397	261	649.822,831 594.961,655	9.284	261	649.822,831 594.961,655	262	649.823,864 594.975,426	13.81
262	649.823,864 594.975,426	263	649.824,449 594.988,795	13.38 1	263	649.824,449 594.988,795	264	649.825,353 595.009,455	20.68	264	649.825,353 595.009,455	265	649.825,902 595.035,173	25.72 4
265	649.825,902 595.035,173	266	649.826,659 595.059,699	24.53 8	266	649.826,659 595.059,699	267	649.827,431 595.092,98	33.29	267	649.827,431 595.092,98	268	649.827,743 595.115,676	22.69 8
268	649.827,743 595.115,676	269	649.827,827 595.121,74	6.065	269	649.827,827 595.121,74	270	649.827,37 595.154,631	32.89 5	270	649.827,37 595.154,631	271	649.827,159 595.182,81	28.18
271	649.827,159 595.182,81	272	649.827,166 595.184,288	1.478	272	649.827,166 595.184,288	273	649.827,307 595.213,823	29.53 5	273	649.827,307 595.213,823	274	649.827,521 595.230,995	17.17 3
274	649.827,521 595.230,995	275	649.828,596 595.249,045	18.08 2	275	649.828,596 595.249,045	276	649.829,144 595.260,952	11.92	276	649.829,144 595.260,952	277	649.829,342 595.278,22	17.26 9
277	649.829,342 595.278,22	278	649.829,817 595.289,086	10.87 6	278	649.829,817 595.289,086	279	649.830,278 595.305,398	16.31 9	279	649.830,278 595.305,398	280	649.831,193 595.323,899	18.52 4
280	649.831,193 595.323,899	281	649.832,816 595.342,82	18.99	281	649.832,816 595.342,82	282	649.834,248 595.359,233	16.47 5	282	649.834,248 595.359,233	283	649.836,007 595.379,192	20.03 6
283	649.836,007 595.379,192	284	649.837,938 595.398,037	18.94 4	284	649.837,938 595.398,037	285	649.839,21 595.404,013	6.11	285	649.839,21 595.404,013	286	649.839,776 595.406,674	2.72
286	649.839,776 595.406,674	287	649.843,201 595.418,203	12.02 7	287	649.843,201 595.418,203	288	649.847,208 595.433,003	15.33 3	288	649.847,208 595.433,003	289	649.849,987 595.448,219	15.46 8
289	649.849,987 595.448,219	290	649.851,911 595.467,639	19.51 5	290	649.851,911 595.467,639	291	649.852,066 595.472,505	4.868	291	649.852,066 595.472,505	292	649.852,576 595.488,578	16.08 1
292	649.852,576 595.488,578	293	649.856,201 595.518,702	30.34 1	293	649.856,201 595.518,702	294	649.858,358 595.540,17	21.57 6	294	649.858,358 595.540,17	295	649.860,192 595.556,52	16.45 3
295	649.860,192 595.556,52	296	649.862,078 595.569,314	12.93 2	296	649.862,078 595.569,314	297	649.865,477 595.587,692	18.69	297	649.865,477 595.587,692	298	649.869,552 595.605,484	18.25 3
298	649.869,552 595.605,484	299	649.874,93 595.630,845	25.92 5	299	649.874,93 595.630,845	300	649.880,445 595.655,26	25.03	300	649.880,445 595.655,26	301	649.883,201 595.663,724	8.901

Punct început	X / Y	Punct sfârșit	X / Y	Lungime segment	Punct început	X / Y	Punct sfârșit	X / Y	Lungime segment	Punct început	X / Y	Punct sfârșit	X / Y	Lungime segment
301	649.883,201 595.663,724	302	649.888,187 595.672,494	10.089	302	649.888,187 595.672,494	303	649.888,457 595.672,843	0.441	303	649.888,457 595.672,843	304	649.896,966 595.683,843	13.907
304	649.896,966 595.683,843	305	649.903,425 595.691,021	9.656	305	649.903,425 595.691,021	306	649.914,271 595.701,194	14.87	306	649.914,271 595.701,194	307	649.925,758 595.710,814	14.983
307	649.925,758 595.710,814	308	649.936,222 595.721,197	14.741	308	649.936,222 595.721,197	309	649.947,565 595.729,988	14.351	309	649.947,565 595.729,988	310	649.958,148 595.738,736	13.731
310	649.958,148 595.738,736	311	649.964,495 595.745,078	8.972	311	649.964,495 595.745,078	312	649.970,444 595.751,765	8.95	312	649.970,444 595.751,765	313	649.978,117 595.762,515	13.207
313	649.978,117 595.762,515	314	649.984,262 595.773,922	12.957	314	649.984,262 595.773,922	315	649.988,812 595.786,247	13.138	315	649.988,812 595.786,247	316	649.988,918 595.786,685	0.45
316	649.988,918 595.786,685	317	649.992,319 595.800,795	14.514	317	649.992,319 595.800,795	318	649.994,008 595.811,662	10.997	318	649.994,008 595.811,662	319	649.997,398 595.864,17	52.618
319	649.997,398 595.864,17	320	650.004,226 595.950,429	86.529	320	650.004,226 595.950,429	321	650.012,204 595.988,029	38.437	321	650.012,204 595.988,029	322	650.022,285 596.030,261	43.419
322	650.022,285 596.030,261	323	650.045,388 596.091,598	65.544	323	650.045,388 596.091,598	324	650.054,019 596.125,79	35.265	324	650.054,019 596.125,79	325	650.056,793 596.161,214	35.532
325	650.056,793 596.161,214	326	650.062,028 596.209,994	49.06	326	650.062,028 596.209,994	327	650.077,735 596.303,289	94.608	327	650.077,735 596.303,289	328	650.079,1 596.313,2	10.005
328	650.079,1 596.313,2	329	650.091,057 596.400,006	87.625	329	650.091,057 596.400,006	330	650.098,338 596.458,363	58.809	330	650.098,338 596.458,363	331	650.099,364 596.491,889	33.542
331	650.099,364 596.491,889	332	650.103,372 596.508,159	16.756	332	650.103,372 596.508,159	333	650.109,884 596.525,68	18.692	333	650.109,884 596.525,68	334	650.115,144 596.550,711	25.578
334	650.115,144 596.550,711	335	650.119,607 596.599,927	49.418	335	650.119,607 596.599,927	336	650.119,757 596.647,299	47.372	336	650.119,757 596.647,299	337	650.121,657 596.682,738	35.49
337	650.121,657 596.682,738	338	650.119,678 596.747,738	65.03	338	650.119,678 596.747,738	339	650.110,303 596.819,485	72.357	339	650.110,303 596.819,485	340	650.108,907 596.823,34	4.1
340	650.108,907 596.823,34	341	650.108,666 596.829,698	6.362	341	650.108,666 596.829,698	342	650.109,566 596.845,434	15.762	342	650.109,566 596.845,434	343	650.111,617 596.858,113	12.844
343	650.111,617 596.858,113	344	650.113,411 596.866,31	8.391	344	650.113,411 596.866,31	345	650.116,147 596.874,193	8.345	345	650.116,147 596.874,193	346	650.118,483 596.881,844	7.999
346	650.118,483 596.881,844	347	650.119,058 596.883,726	1.968	347	650.119,058 596.883,726	348	650.122,776 596.892,612	9.633	348	650.122,776 596.892,612	349	650.125,359 596.902,487	10.207
349	650.125,359 596.902,487	350	650.128,658 596.908,465	6.828	350	650.128,658 596.908,465	351	650.130,758 596.912,269	4.346	351	650.130,758 596.912,269	352	650.133,122 596.916,552	4.892
352	650.133,122 596.916,552	353	650.143,575 596.931,719	18.42	353	650.143,575 596.931,719	354	650.155,487 596.947,789	20.004	354	650.155,487 596.947,789	355	650.166,402 596.966,969	22.068
355	650.166,402 596.966,969	356	650.173,427 596.982,639	17.173	356	650.173,427 596.982,639	357	650.179,006 596.997,55	15.92	357	650.179,006 596.997,55	358	650.185,178 597.015,104	18.608
358	650.185,178 597.015,104	359	650.191,983 597.033,607	19.715	359	650.191,983 597.033,607	360	650.196,488 597.050,786	17.759	360	650.196,488 597.050,786	361	650.201,044 597.066,022	15.903
361	650.201,044 597.066,022	362	650.207,099 597.083,318	18.326	362	650.207,099 597.083,318	363	650.212,742 597.099,696	17.323	363	650.212,742 597.099,696	364	650.216,03 597.113,621	14.308
364	650.216,03 597.113,621	365	650.218,065 597.126,608	13.145	365	650.218,065 597.126,608	366	650.218,71 597.132,591	6.018	366	650.218,71 597.132,591	367	650.224,586 597.131,792	5.93
367	650.224,586 597.131,792	368	650.226,168 597.141,209	9.549	368	650.226,168 597.141,209	369	650.220,42 597.142,165	5.827	369	650.220,42 597.142,165	370	650.221,156 597.145,252	3.174
370	650.221,156 597.145,252	371	650.223,167 597.149,718	4.897	371	650.223,167 597.149,718	372	650.219,662 597.150,634	3.623	372	650.219,662 597.150,634	373	650.213,806 597.137,326	14.539
373	650.213,806 597.137,326	374	650.213,131 597.129,684	7.671	374	650.213,131 597.129,684	375	650.212,53 597.122,881	6.83	375	650.212,53 597.122,881	376	650.211,87 597.115,396	7.514
376	650.211,87 597.115,396	377	650.202,573 597.085,445	31.361	377	650.202,573 597.085,445	378	650.199,435 597.075,338	10.583	378	650.199,435 597.075,338	379	650.198,671 597.072,876	2.577
379	650.198,671 597.072,876	380	650.191,449 597.049,622	24.35	380	650.191,449 597.049,622	381	650.188,92 597.041,479	8.527	381	650.188,92 597.041,479	382	650.186,373 597.033,277	8.588
382	650.186,373 597.033,277	383	650.183,734 597.024,78	8.897	383	650.183,734 597.024,78	384	650.181,45 597.018,53	6.654	384	650.181,45 597.018,53	385	650.170,537 596.988,665	31.797
385	650.170,537 596.988,665	386	650.165,402 596.974,61	14.964	386	650.165,402 596.974,61	387	650.158,893 596.961,807	14.363	387	650.158,893 596.961,807	388	650.154,167 596.952,51	10.429
388	650.154,167 596.952,51	389	650.151,107 596.948,364	5.153	389	650.151,107 596.948,364	390	650.138,012 596.930,625	22.049	390	650.138,012 596.930,625	391	650.132,562 596.923,241	9.178
391	650.132,562 596.923,241	392	650.126,605 596.912,438	12.336	392	650.126,605 596.912,438	393	650.121,344 596.902,898	10.894	393	650.121,344 596.902,898	394	650.118,666 596.894,214	9.088
394	650.118,666 596.894,214	395	650.115,204 596.882,988	11.748	395	650.115,204 596.882,988	396	650.111,286 596.870,282	13.297	396	650.111,286 596.870,282	397	650.111,193 596.869,929	0.365

Punct	X / Punct	Y / Punct	stărsit	Y / stărsit	X / Punct	Y / Punct	stărsit	Y / stărsit	Lungime
397	650.111,193	596.869,929			400	650.106,842			4.706
400	650.106,184	596.845,966			403	650.103,871			7.595
403	650.104,725	596.822,033			405	650.109,574			16.32
406	650.112,67	596.766,696			408	650.113,97			3.968
409	650.113,97	596.740,847			411	650.115,035			1.474
412	650.115,118	596.720,475			414	650.115,786			5.567
415	650.116,098	596.685,061			417	650.117,096			6.06
418	650.116,86	596.679,291			420	650.115,853			9.647
421	650.116,003	596.643,829			424	650.116,492			9.035
424	650.116,492	596.612,411			426	650.115,599			4.242
427	650.115,096	596.600,722			429	650.112,165			3.912
430	650.111,701	596.572,296			432	650.110,376			5.945
433	650.109,671	596.555,305			435	650.109,366			1.233
436	650.109,219	596.551,52			438	650.104,115			0.913
439	650.103,845	596.525,585			441	650.099,202			4.082
442	650.097,894	596.493,772			444	650.094,807			4.832
445	650.094,461	596.485,754			447	650.093,408			2.043
448	650.093,261	596.469,043			450	650.091,695			4.207
451	650.090,995	596.448,972			453	650.089,62			22.78
454	650.087,062	596.418,19			456	650.076,73			29.33
457	650.072,968	596.312,009			460	650.068,433			19.58
460	650.059,236	596.229,152			463	650.052,848			22.82
463	650.052,848	596.184,108			466	650.050,876			4.709
466	650.050,876	596.164,336			469	650.048,161			12.19
469	650.048,161	596.129,264			472	650.042,578			16.47
472	650.042,578	596.100,638			475	650.032,085			17.13
475	650.032,085	596.071,377			478	650.024,054			21.28
478	650.031,956	596.015,34			481	650.011,212			8.984
481	650.009,206	595.996,415			484	649.996,66			19.13
484	649.996,66	595.931,852			487	649.990,81			16.66
487	649.988,39	595.801,956			490	649.984,598			9.778
490	649.981,13	595.779,574			493	649.977,338			7.208

398	650.107,718	596.856,834			401	650.105,635			3.926
401	650.105,635	596.842,079			404	650.106,24			13.47
404	650.106,24	596.808,639			407	650.112,72			8.185
407	650.112,72	596.758,578			410	650.114,515			9.69
410	650.114,515	596.731,172			413	650.115,707			10.47
413	650.115,707	596.710,013			416	650.117,056			17.02
416	650.117,056	596.686,062			419	650.116,287			14.71
419	650.116,287	596.664,589			422	650.116,229			14.49
422	650.116,229	596.629,34			425	650.116,492			3.81
425	650.116,492	596.608,627			428	650.113,844			10.56
428	650.113,844	596.590,236			431	650.111,145			4.683
431	650.111,145	596.567,646			434	650.109,518			1.29
434	650.109,518	596.554,024			437	650.107,94			12.75
437	650.107,94	596.538,831			440	650.100,127			11.67
440	650.100,127	596.514,516			443	650.095,272			14.95
443	650.095,272	596.490,574			446	650.094,269			2.678
446	650.094,269	596.483,082			449	650.092,96			8.43
449	650.092,96	596.460,618			452	650.090,033			5.78
452	650.090,033	596.443,273			455	650.083,62			29.18
455	650.083,62	596.389,21			458	650.068,073			36.86
458	650.068,073	596.275,47			461	650.057,371			10.61
461	650.057,371	596.218,706			464	650.052,614			1.807
464	650.052,614	596.182,316			467	650.050,345			8.92
467	650.050,345	596.155,432			470	650.048,113			0.594
470	650.048,113	596.129,264			473	650.038,684			12.00
473	650.038,684	596.089,283			476	650.027,287			12.45
476	650.027,287	596.059,882			479	650.013,167			17.11
479	650.013,167	596.015,34			482	650.002,902			27.49
482	650.002,902	595.969,657			485	649.994,128			41.49
485	649.994,128	595.890,438			488	649.985,193			12.10
488	649.985,193	595.790,284			491	649.978,066			6.876

399	650.106,842	596.850,625			402	650.103,871			12.62
402	650.103,871	596.829,579			405	650.109,574			25.96
405	650.109,574	596.782,886			408	650.113,747			13.80
408	650.113,747	596.744,809			411	650.115,035			9.24
411	650.115,035	596.721,946			414	650.115,786			1.397
414	650.115,786	596.708,619			417	650.117,096			0.716
417	650.117,096	596.685,347			420	650.115,853			11.12
420	650.115,853	596.653,475			423	650.116,352			7.896
423	650.116,352	596.621,445			426	650.115,599			3.72
426	650.115,599	596.604,933			429	650.112,165			14.15
429	650.112,165	596.576,181			432	650.110,376			6.484
432	650.110,376	596.561,208			435	650.109,366			1.289
435	650.109,366	596.552,744			438	650.104,115			12.95
438	650.104,115	596.526,457			441	650.099,202			2.903
441	650.099,202	596.511,764			444	650.094,807			2.639
444	650.094,807	596.490,574			447	650.093,408			12.03
447	650.093,408	596.471,081			450	650.091,695			7.604
450	650.091,695	596.453,12			453	650.089,62			2.479
453	650.089,62	596.440,829			456	650.076,73			48.59
456	650.076,73	596.341,105			459	650.062,68			27.57
459	650.062,68	596.248,433			462	650.055,806			12.07
462	650.055,806	596.206,738			465	650.051,156			13.36
465	650.051,156	596.169,036			468	650.049,144			13.47
468	650.049,144	596.142,011			471	650.046,933			12.8
471	650.046,933	596.116,517			474	650.038,053			1.944
474	650.038,053	596.087,444			477	650.024,054			8.395
477	650.024,054	596.052,136			480	650.011,212			10.35
480	650.011,212	596.005,172			483	649.999,885			19.18
483	649.999,885	595.950,712			486	649.990,81			72.07
486	649.990,81	595.818,44			489	649.984,598			1.677
489	649.984,598	595.788,716			492	649.977,338			1.635

Punct început	X / Y	Punct sfârșit	X / Y	Lungime segment	Punct început	X / Y	Punct sfârșit	X / Y	Lungime segment	Punct început	X / Y	Punct sfârșit	X / Y	Lungime segment
493	649.973,717 595.765,722	494	649.969,658 595.758,864	7.969	494	649.969,658 595.758,864	495	649.968,315 595.756,594	2.638	495	649.968,315 595.756,594	496	649.960,912 595.748,509	10.962
496	649.960,912 595.748,509	497	649.952,621 595.740,044	11.849	497	649.952,621 595.740,044	498	649.943,248 595.732,929	11.767	498	649.943,248 595.732,929	499	649.912,001 595.706,105	41.181
499	649.912,001 595.706,105	500	649.893,704 595.688,128	25.651	500	649.893,704 595.688,128	501	649.886,833 595.679,193	11.271	501	649.886,833 595.679,193	502	649.885,071 595.676,822	2.954
502	649.885,071 595.676,822	503	649.880,423 595.670,57	7.791	503	649.880,423 595.670,57	504	649.874,423 595.657,43	14.445	504	649.874,423 595.657,43	505	649.865,343 595.611,577	46.743
505	649.865,343 595.611,577	506	649.864,153 595.605,565	6.128	506	649.864,153 595.605,565	507	649.858,433 595.577,098	29.036	507	649.858,433 595.577,098	508	649.857,496 595.572,432	4.759
508	649.857,496 595.572,432	509	649.854,017 595.548,462	24.222	509	649.854,017 595.548,462	510	649.846,915 595.476,824	71.989	510	649.846,915 595.476,824	511	649.845,707 595.464,637	12.247
511	649.845,707 595.464,637	512	649.844,962 595.458,043	6.636	512	649.844,962 595.458,043	513	649.842,971 595.440,42	17.734	513	649.842,971 595.440,42	514	649.837,216 595.418,584	22.582
514	649.837,216 595.418,584	515	649.835,811 595.413,251	5.516	515	649.835,811 595.413,251	516	649.833,487 595.400,811	12.655	516	649.833,487 595.400,811	517	649.831,467 595.389,994	11.004
517	649.831,467 595.389,994	518	649.831,36 595.388,794	1.205	518	649.831,36 595.388,794	519	649.830,28 595.376,607	12.234	519	649.830,28 595.376,607	520	649.827,567 595.345,999	30.728
520	649.827,567 595.345,999	521	649.826,617 595.335,277	10.764	521	649.826,617 595.335,277	522	649.822,267 595.268,7	66.719	522	649.822,267 595.268,7	523	649.822,247 595.258,846	9.855
523	649.822,247 595.258,846	524	649.822,229 595.249,951	8.895	524	649.822,229 595.249,951	525	649.822,116 595.195,007	54.944	525	649.822,116 595.195,007	526	649.822,094 595.184,142	10.865
526	649.822,094 595.184,142	527	649.821,702 595.133,97	50.174	527	649.821,702 595.133,97	528	649.821,642 595.129,817	4.153	528	649.821,642 595.129,817	529	649.821,228 595.100,784	29.036
529	649.821,228 595.100,784	530	649.820,86 595.074,97	25.816	530	649.820,86 595.074,97	531	649.820,539 595.052,472	22.501	531	649.820,539 595.052,472	532	649.820,456 595.046,65	5.823
532	649.820,456 595.046,65	533	649.819,041 594.986,158	60.508	533	649.819,041 594.986,158	534	649.818,876 594.983,171	2.992	534	649.818,876 594.983,171	535	649.817,224 594.953,187	30.029
535	649.817,224 594.953,187	536	649.817,18 594.952,388	0.801	536	649.817,18 594.952,388	537	649.816,347 594.947,27	5.185	537	649.816,347 594.947,27	1	649.814,411 594.935,367	12.059

** Lungimile segmentelor sunt determinate în planul de proiecție Stereo 70 și sunt rotunjite la 1 milimetru.

*** Distanța dintre puncte este formată din segmente cumulate ce sunt mai mici decât valoarea 1 milimetru.

PLAN DE AMPLASAMENT SI DELIMITARE A IMOBILULUI

Scara 1 : 1000

Nr. cadastral	Suprafata masurata a imobilului (mp)	Adresa imobilului
53456	16941	Localitatea Muncelu si extravilan Comuna Ion Creanga, Judetul Neamt
Cartea Funciara nr.	53456	Unitatea Administrativ Teritoriala (UAT) Ion Creanga

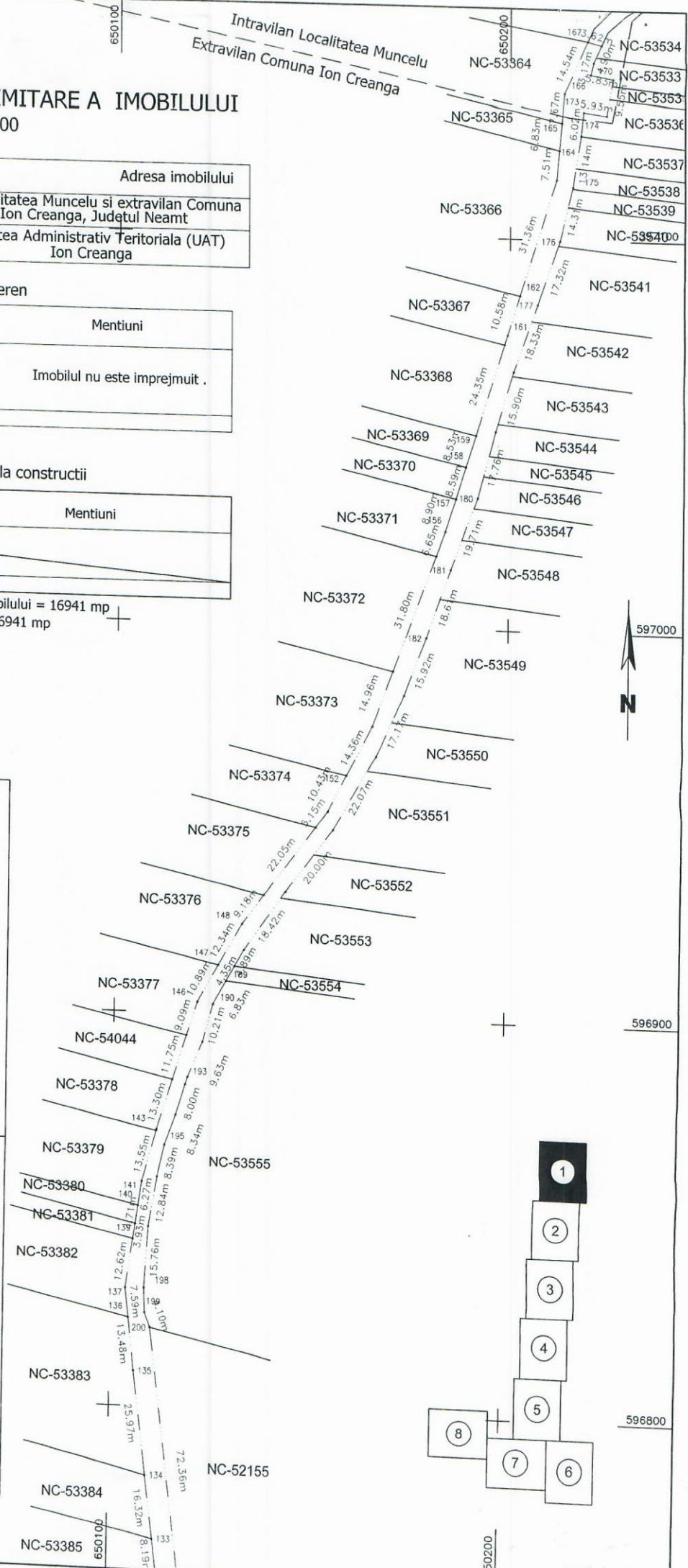
A. Date referitoare la teren

Nr. parcela	Categoria de folosinta	Suprafata (mp)	Mentiuни
1	Dr	16794	extravilan
2	Dr	147	intravilan
Total		16941	

B. Date referitoare la constructii

Cod constr.	Destinatia	Suprafata construita la sol (mp)	Mentiuни
Total			

Suprafata totala masurata a imobilului = 16941 mp
 Suprafata din act = 16941 mp



Executant: GIURGILA N.Gelu
 Autorizatie Cat.B, Seria RO-B-F, Nr. 0167
 Confirm executarea masuratorilor la teren,
 corectitudinea intocmirii documentatiei cadastrale si
 corespondenta acestuia cu realitatea din teren

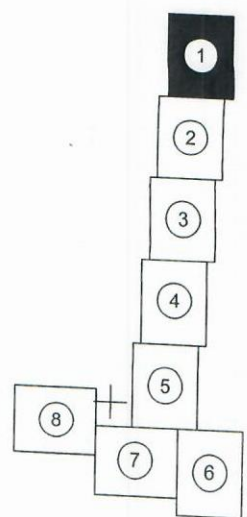


17.04.2024

Inspector
 Confirm introducerea imobilului in baza de date
 integrata si atribuirea numarului cadastral

Stampila BCPI

se racordeaza cu plansa nr. 2



PLAN DE AMPLASAMENT SI DELIMITARE A IMOBILULUI

Scara 1 : 1000

Nr. cadastral	Suprafata masurata a imobilului (mp)	Adresa imobilului
53456	16941	Localitatea Muncelu si extravilan Comuna Ion Creanga, Judetul Neamt
Cartea Funciara nr.	53456	Unitatea Administrativ Teritoriala (UAT) Ion Creanga

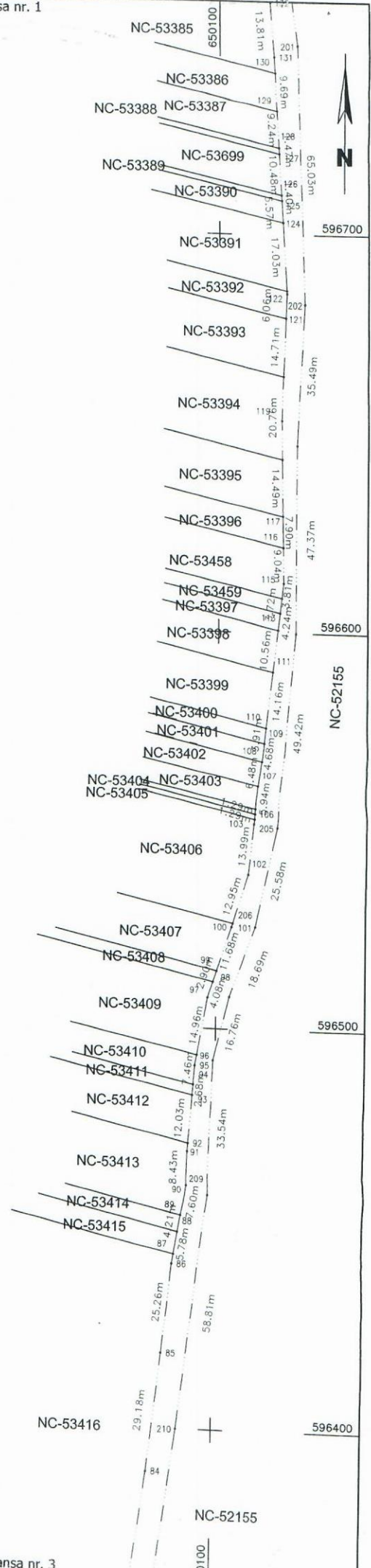
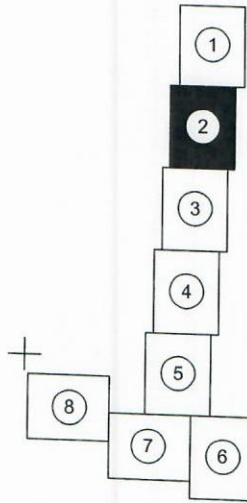
A. Date referitoare la teren

Nr. parcela	Categoria de folosinta	Suprafata (mp)	Mentii
1	Dr	16794	extravilan
2	Dr	147	
Total		16941	Imobilul nu este imprejmuit .

B. Date referitoare la constructii

Cod constr.	Destinatia	Suprafata construita la sol (mp)	Mentii
Total			

Suprafata totala masurata a imobilului = 16941 mp
 Suprafata din act = 16941 mp



Executant: GIURGILA N.Gelu
 Autorizatie Cat.B, Seria RO-B-F, Nr. 0167
 Confirm executarea masuratorilor la teren,
 corectitudinea intocmirii documentatiei cadastrale si
 corespondenta acesteia cu realitatea din teren



17.04.2024

Inspector
 Confirm introducerea imobilului in baza de date
 integrata si atribuirea numarului cadastral

Stampila BCPI

PLAN DE AMPLASAMENT SI DELIMITARE A IMOBILULUI

Scara 1 : 1000

Nr. cadastral	Suprafata masurata a imobilului (mp)	Adresa imobilului
53456	16941	Localitatea Muncelu si extravilan Comuna Ion Creanga, Judetul Neamt
Cartea Funciara nr.	53456	Unitatea Administrativ Teritoriala (UAT) Ion Creanga

A. Date referitoare la teren

Nr. parcela	Categoria de folosinta	Suprafata (mp)	Mentiuni
1	Dr	16794	extravilan
2	Dr	147	intravilan
Total		16941	Imobilul nu este imprejmuit .

B. Date referitoare la constructii

Cod constr.	Destinatia	Suprafata construita la sol (mp)	Mentiuni
Total			

Suprafata totala masurata a imobilului = 16941 mp
 Suprafata din act = 16941 mp

Executant: GIURGILA N.Gelu
 Autorizatie Cat.B, Seria RO-B-F, Nr. 0167
 Confirm executarea masuratorilor la teren,
 corectitudinea intocmirii documentatiei cadastrale si
 corespondenta acesteia cu realitatea din teren

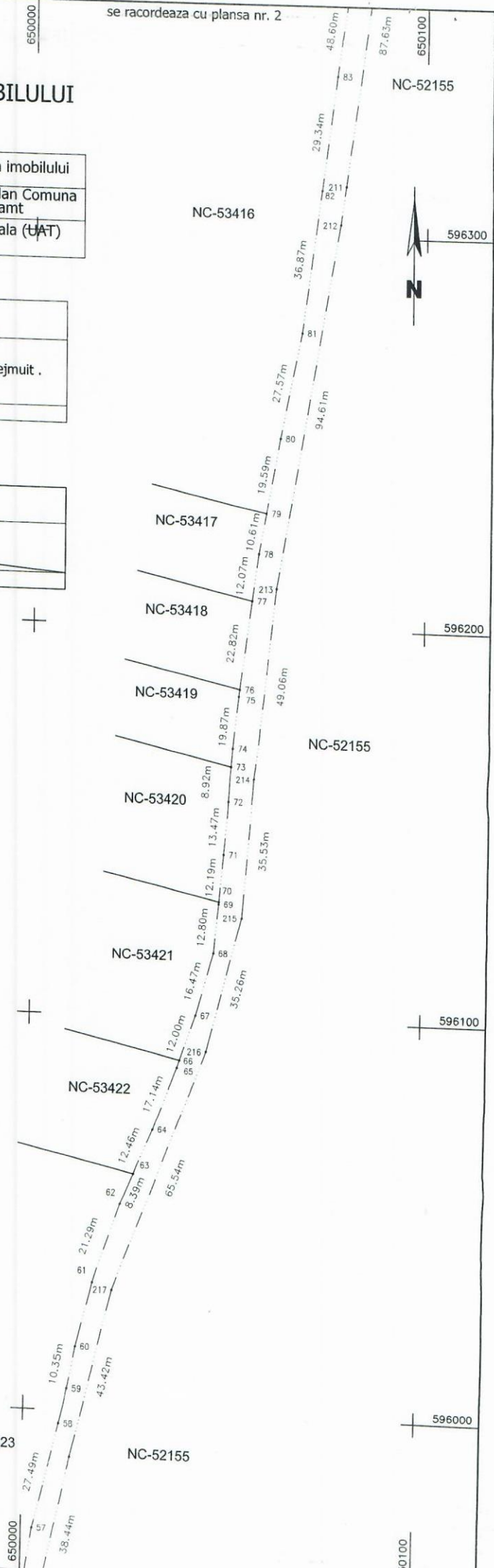
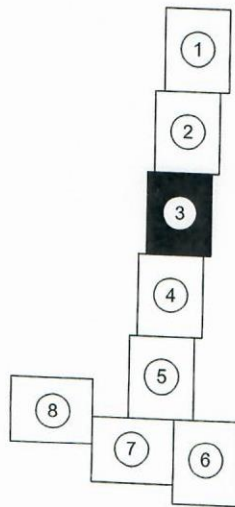


17.04.2024

Inspector

Confirm introducerea imobilului in baza de date
 integrata si atribuirea numarului cadastral

Stampila BCPI



PLAN DE AMPLASAMENT SI DELIMITARE A IMOBILULUI

Scara 1 : 1000

Nr. cadastral	Suprafata masurata a imobilului (mp)	Adresa imobilului
53456	16941	Localitatea Muncelu si extravilan Comuna Ion Creanga, Judetul Neamt
Cartea Funciara nr.	53456	Unitatea Administrativ Teritoriala (UAT) Ion Creanga

A. Date referitoare la teren

Nr. parcela	Categoria de folosinta	Suprafata (mp)	Mentiuни
1	Dr	16794	extravilan
2	Dr	147	intravilan
Total		16941	

B. Date referitoare la constructii

Cod constr.	Destinatia	Suprafata construita la sol (mp)	Mentiuни
Total			

Suprafata totala masurata a imobilului = 16941 mp
Suprafata din act = 16941 mp

Executant: GIURGILA N.Gelu
Autorizatie Cat.B, Seria RO-B-F, Nr. 0167
Confirm executarea masuratorilor la teren, corectitudinea intocmirii documentatiei cadastrale si corespondenta acesteia cu realitatea din teren



17.04.2024

595900

595800

595700

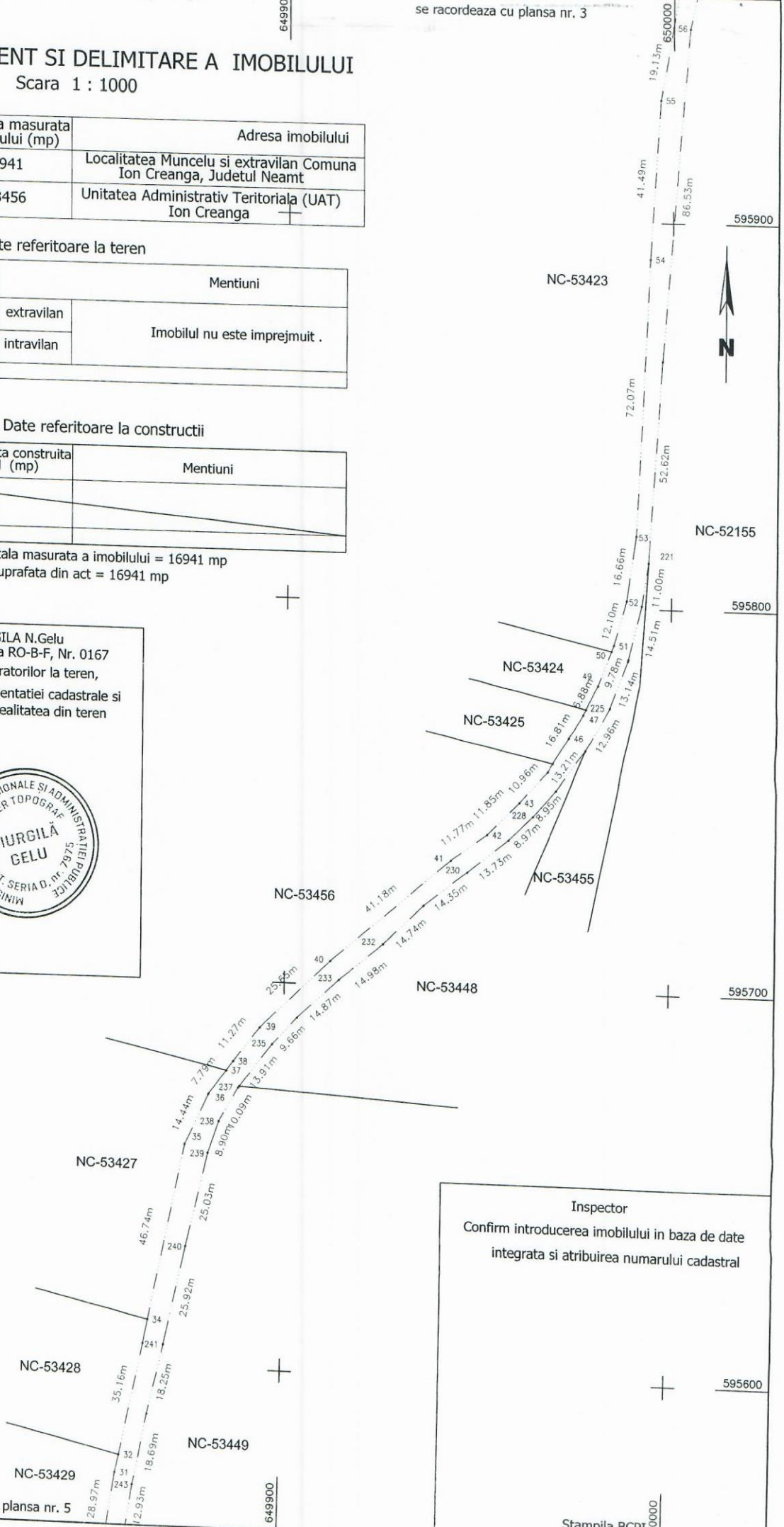
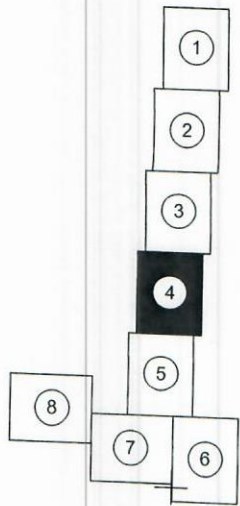
595600

595900

595800

595700

595600



Inspector
Confirm introducerea imobilului in baza de date integrata si atribuirea numarului cadastral

Stampila BCPI 50000

PLAN DE AMPLASAMENT SI DELIMITARE A IMOBILULUI

Scara 1 : 1000

Nr. cadastral	Suprafata masurata a imobilului (mp)	Adresa imobilului
53456	16941	Localitatea Muncelu si extravilan Comuna Ion Creanga, Judetul Neamt
Cartea Funciara nr.	53456	Unitatea Administrativ Teritoriala (UAT) Ion Creanga

A. Date referitoare la teren

Nr. parcela	Categoria de folosinta	Suprafata (mp)	Mentii	
1	Dr	16794	extravilan	Imobilul nu este imprejmuit .
2	Dr	147	intravilan	
Total		16941		

B. Date referitoare la constructii

Cod constr.	Destinatia	Suprafata construita la sol (mp)	Mentii
Total			

Suprafata totala masurata a imobilului = 16941 mp
Suprafata din act = 16941 mp

Executant: GIURGILA N.Gelu
Autorizatie Cat.B, Seria RO-B-F, Nr. 0167
Confirm executarea masuratorilor la teren,
corectitudinea intocmirii documentatiei cadastrale si
corespondenta acestora cu realitatea din teren

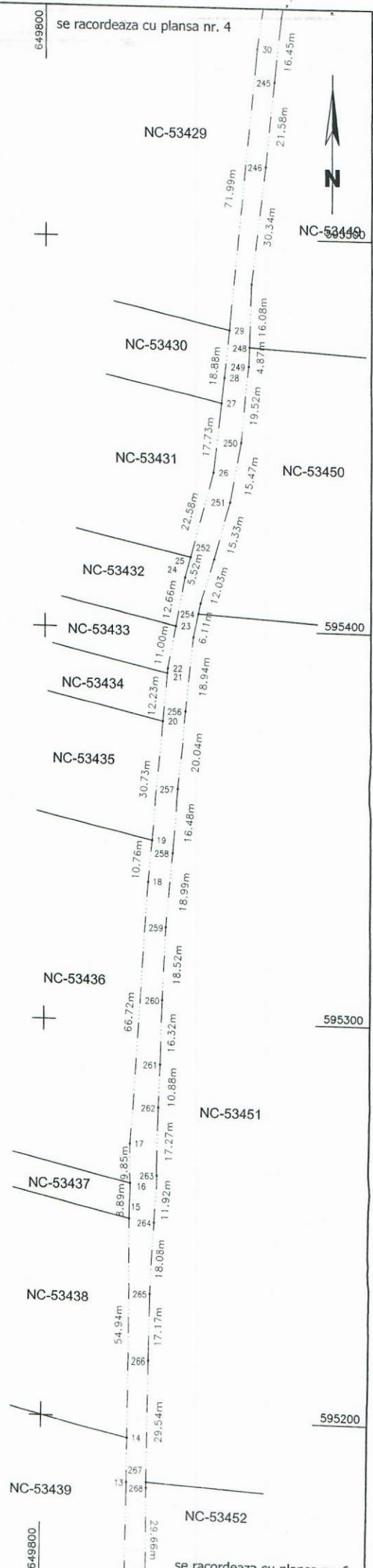
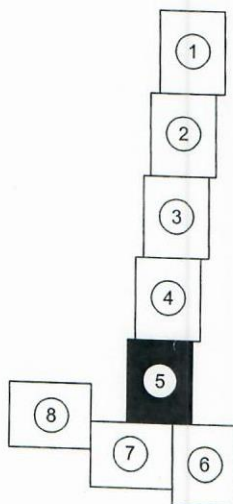


17.04.2024

Inspector

Confirm introducerea imobilului in baza de date
integrata si atribuirea numarului cadastral

Stampila BCPI



PLAN DE AMPLASAMENT SI DELIMITARE A IMOBILULUI

Scara 1 : 1000

Nr. cadastral	Suprafata masurata a imobilului (mp)	Adresa imobilului
53456	16941	Localitatea Muncelul si extravilan Comuna Ion Creanga, Judetul Neamt
Cartea Funciara nr.	53456	Unitatea Administrativ Teritoriala (UAT)
		Ion Creanga

A. Date referitoare la teren

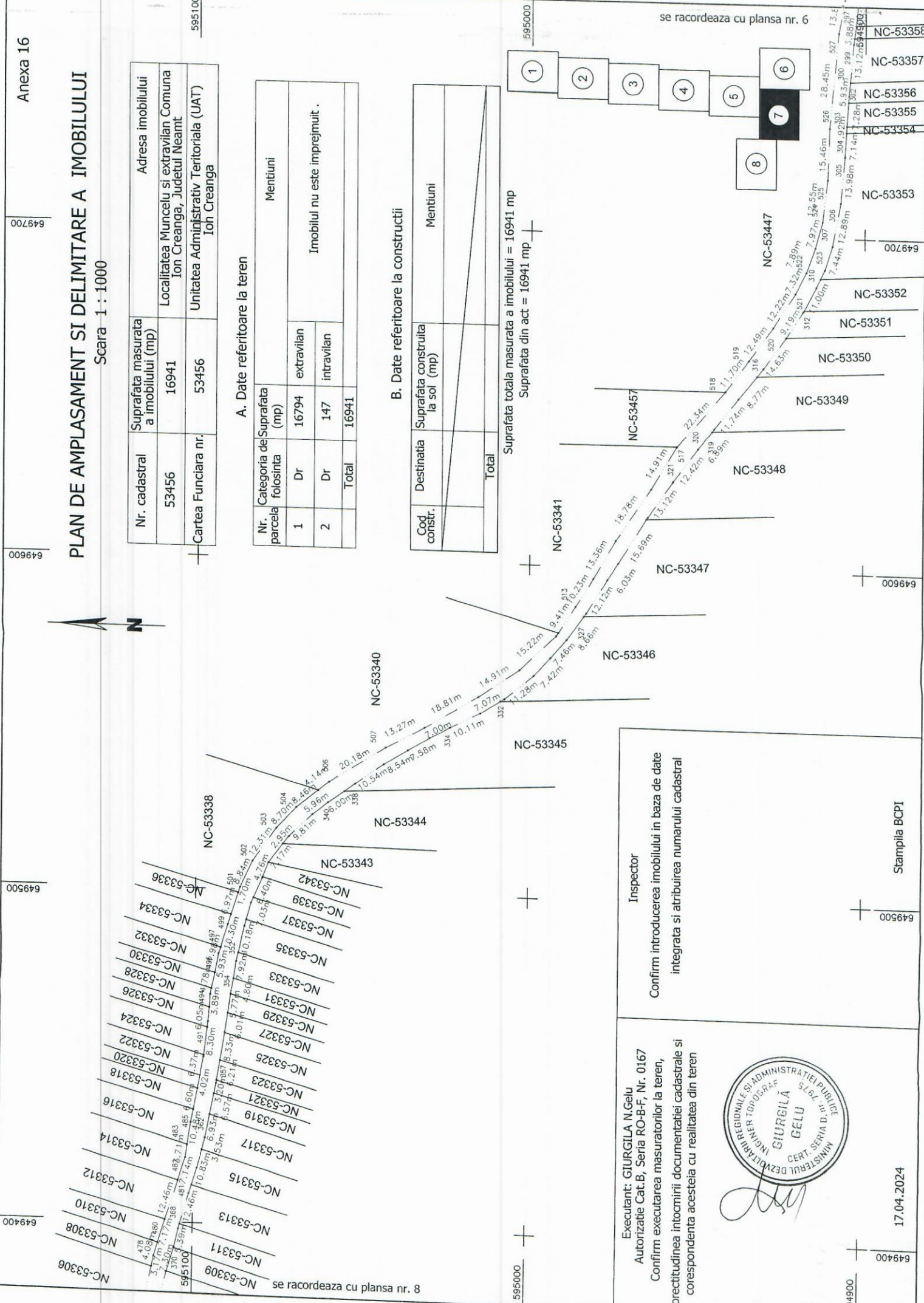
Nr. parcela	Categoria de folosinta	Suprafata (mp)	Mentiiuni
1	Dr	16794	extravilan
2	Dr	147	intravilan
Total		16941	

Imobilul nu este imprejmuit.

B. Date referitoare la constructii

Cod constr.	Destinatia	Suprafata construita la soi (mp)	Mentiiuni
Total			

Suprafata totala masurata a imobilului = 16941 mp
Suprafata din act = 16941 mp



Inspector

Confirm introducerea imobilului in baza de date integrata si atribuirea numarului cadastral

Executant: GIURGILIA N.Gelu
Autorizatie Cat.B, Seria RO-B-F, Nr. 0167

Confirm executarea masuratorilor la teren, corectitudinea intocmirii documentatiei cadastrale si corespondenta acesteia cu realitatea din teren

Stampila BCPI

17.04.2024



PLAN DE AMPLASAMENT SI DELIMITARE A IMOBILULUI

Scara 1 : 1000

Nr. cadastral	53456	Localitatea Muncelul si extravilan Comuna Ion Creanga, Judetul Neamt	Unitatea Administrativ Teritoriala (UAT)	Ion Creanga
Suprafata masurata a imobilului (mp)	16941	Cartea Funciara nr. 53456		

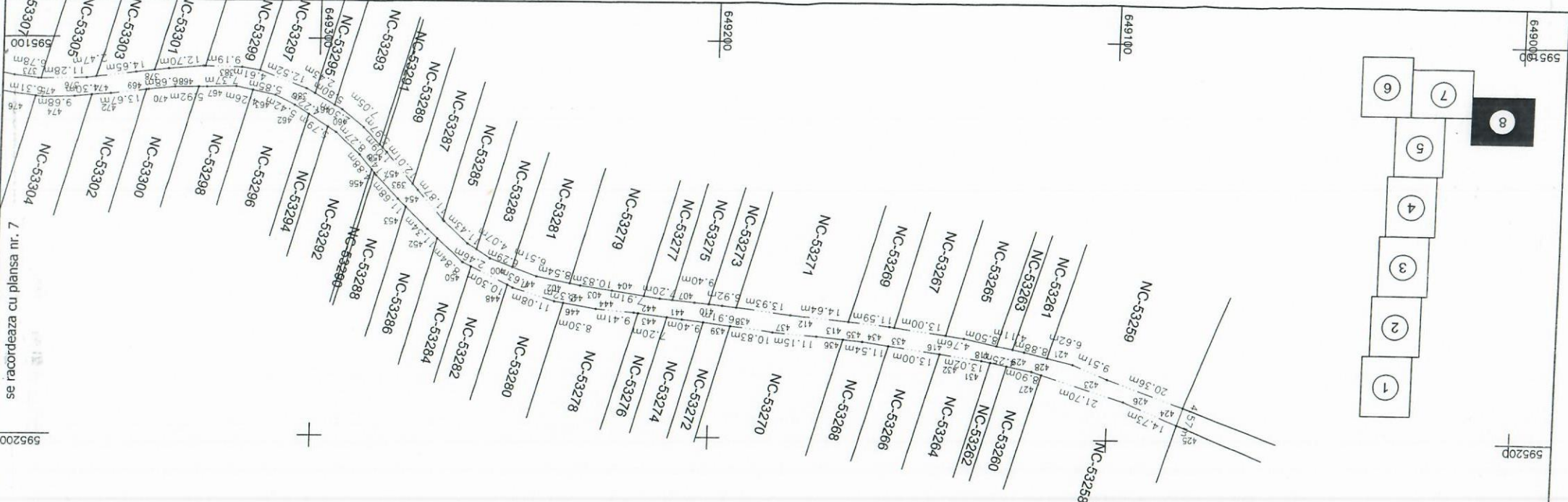
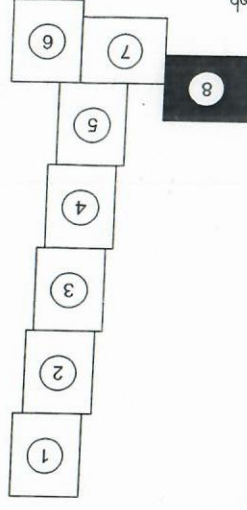
A. Date referitoare la teren

Nr. Categoria de Suprafata (mp)	Suprafata de Suprafata (mp)		Total
	extravilan	intravilan	
1	16794	147	16941
2			
Total			

B. Date referitoare la constructii

Cod constr.	Destinatia	Suprafata construita la sol (mp)	Total
Total			

Suprafata totala masurata a imobilului = 16941 mp
Suprafata din act = 16941 mp



se racordeaza cu plansa nr. 7



Inspector

Confirm introducerea imobilului in baza de date integrata si atribuirea numarului cadastral

Executant: GIURGIU N.Gelu
Autorizatie Cat.B, Seria RO-B-F, Nr. 0167
Confirm executarea masuratorilor la teren, corectitudinea intocmirii documentatiei cadastrale si corespondenta acesteia cu realitatea din teren

Stampila BCP

17.04.2024

Tabel centralizator drumuri exploatare

MUNCELU - RECEA - tronson III

Nr. crt.	Denumire/identificare	Lungime drum (m)	Suprafata (mp)	tarla	parcela	Operatiuni cadastrale
1	Drum exploatare din str. Spicului (loc. Izvoru) pâna in izlaz comunal (NC-54757)	1338	5792	47	DE-361	Prima inregistrare C.F.
2	Drum exploatare din str. Spicului (loc. Izvoru) pâna in DE-367 (NC-5731)	1005	2494	51	DE-373	Prima inregistrare C.F.
	Drum exploatare la SUD de tarla LOTRU (NC-57311) pâna la canal (proprietate ANIF Neamt)	779	3288	49	DE-367	Provine din sistematic (NC-57311), va trebui actualizat cu acte de proprietate si adresa.
	Drum exploatare de la canal (proprietate ANIF Neamt) pana la str. Teiului (loc. Ion Creanga)	97	480	41	DE-330	Prima inregistrare C.F.
3	Drum exploatare din str. Şesului (loc. Averesti) pâna in canal desecare (proprietatea ANIF Neamt -tarla Luncă Irimia)	1262	5063	76	DE	Provine din sistematic (NC-58743), va trebui actualizat cu acte de proprietate si adresa.
	Drum exploatare de la canal desecare (proprietatea ANIF Neamt -tarla Luncă Irimia) până la DJ 207 C (loc. Stejaru)	66	268	77	DE	Provine din sistematic (NC-58588), va trebui actualizat cu acte de proprietate si adresa.
4	Drum exploatare din str. Gutuiului (loc. Muncelu) pâna DE-229 (din sistematic NC-53456) - completare	20	97	33	DE-229	Prima inregistrare C.F.
	Drum exploatare DE-229 (din sistematic NC-53456)	3375	16941	33	DE-229	Provine din sistematic (NC-53456), va trebui actualizat cu acte de proprietate si adresa.
	Drum exploatare DE-229 - completare pâna la str. Ponor (loc. Recea)	121	621	33	DE-229	Prima inregistrare C.F.
5	Drum exploatare din str. Mihai Viteazu (loc. Muncelu) pâna limta UAT Ion Creanga-UAT Icusesti spre loc. Băluşeşti	2225	8977	30	DE-263	Prima inregistrare C.F.
6	Drum exploatare -Livada Intensivă - din str. Iazului (loc. Stejaru) pâna la str. Enache Fotache (loc. Averesti)	2866	12820	75	DE-555	Prima inregistrare C.F.

7	Drum exploatare (NC-57212) de la canal (proprietate ANIF Neamt) până la Canton David	1380	6631	47	DE-361	Provine din sistematic (NC-57212), va trebui actualizat cu acte de proprietate si adresa.
8	Drum exploatare din str. Mihai Eminesc (loc. Ion Creanga) pâna zona de protectie pâraul Ţiganca (proprietatea A.B.A. Siret Bacau si ANIF Neamt)	1152	4654	38	DE-303	Prima inregistrare C.F.
	Drum exploatare de la zona de protectie pâraul Ţiganca (proprietatea A.B.A. Siret Bacau si ANIF Neamt) până la pasune Ţiganca Izvoru	756	3030	35	DE-284	Prima inregistrare C.F.
	Drum exploatare continuare (ID-5950)	1121	4705	35,87	DE-284, 701	Provine din sistematic (ID-5950), va trebui actualizat cu acte de proprietate si adresa.

PLAN DE AMPLASAMENT SI DELIMITARE A IMOBILULUI

Scara 1 : 1000

597700

597700

Nr. cadastral	Suprafata masurata a imobilului (mp)	Adresa imobilului
58743	5063	Etravilan Comuna Ion Creanga, Judetul Neamt
Cartea Funciara nr.	58743	Unitatea Administrativ Teritoriala (UAT) Ion Creanga

A. Date referitoare la teren

Nr. parcela	Categoria de folosinta	Suprafata (mp)	Mentiiuni	
1	Dr	5063	extravilan	Imobilul nu este imprejmuit .
Total		5063		

B. Date referitoare la constructii

Cod constr.	Destinatia	Suprafata construita la sol (mp)	Mentiiuni
Total			

Suprafata totala masurata a imobilului = 5063 mp
Suprafata din act = 5063 mp

Executant: GIURGILA N.Gelu
Autorizatie Cat.B, Seria RO-B-F, Nr. 0167
Confirm executarea masuratorilor la teren, corectitudinea intocmirii documentatiei cadastrale si corespondenta acesteia cu realitatea din teren



17.04.2024

Inspector

Confirm introducerea imobilului in baza de date integrata si atribuirea numarului cadastral

Stampila BCPI

Zona protectie Paraul Tigancii
A.N.I.F. Neamt si A.B.A. Siret

Schema de dispunere a planselor

